

MAX Lot and Serial Tracking

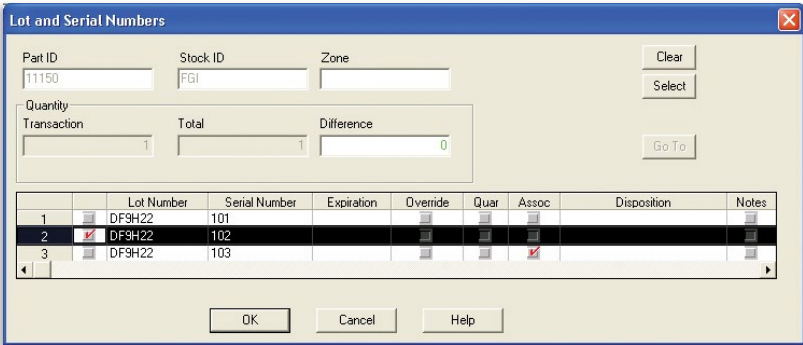
Maintain Lot/Serial Traceability Required for FDA, FAA and Federal Contract Compliance

Maintain lot/serial traceability requirements the Exact MAX way

MAX builds and maintains an audit trail for all lot and/or serial controlled parts by tracking the assigned lot and serial numbers at the transaction level. MAX provides instant access to all information captured for a specific lot/serial number from its receipt to stock until it's shipped to the customer.

Lot/Serial Tracking Capabilities

- Calculate lot/serial expiration dates based upon defined shelf life.
- Color-coded expiration dates clearly identify expired or near expiration lot/serial numbers.
- Disposition field provides quick reference to lot/serial number status.
- Quarantine logic stops all shipments and issues until quarantine is removed.
- Associate function allows you to attach any document or file to a lot/serial number for system-wide tracking.
- Automatically quarantine parts upon receipt from a vendor.
- Link important notes to any lot/serial number.



Assign Lot and Serial Numbers at the Transaction Level, and Link to Process Documentation



- 1 Lot/Serial traceability
- 2 Maintains audit trail
- 3 Easy access to data
- 4 FDA, FAA, and federal contract compliance



Lot Transaction History

Captures a Complete Transaction History of Each Numbered Part

- Look-up lot/serial transactions by part ID, order number, serial number or lot number.
- Zoom in on lot/serial transactions by date range and/or transaction type, limiting “information overload”.
- Select All or up to 10 specific transaction type records.

Part ID	Description	Lot	Serial	Expiration	Order	Type	Date	Quantity	Assc	Stock ID	Quar	Work Center	Dust/Ven	Actual Cost
4	11050 Computer, Milkey (SN)	102			2000130201	R	09/21/2004	1.00		FGI				0.00
5	11050 Computer, Milkey (SN)	102			2000130201	S	09/21/2004	1.00		FGI			100	0.00
6	11050 Computer, Milkey (SN)	103			2000130201	R	09/21/2004	1.00		FGI				0.00
7	11050 Computer, Milkey (SN)	103			2000130201	S	09/21/2004	1.00		FGI			100	0.00
8	11050 Computer, Milkey (SN)	104			2000130201	R	09/21/2004	1.00		FGI				0.00
9	11050 Computer, Milkey (SN)	104			2000120101	S	09/21/2004	1.00		FGI			100	0.00
10	11050 Computer, Milkey (SN)	31			3000010000	R	09/22/1999	1.00		FGI				0.00
11	11050 Computer, Milkey (SN)	32			3000010000	R	09/22/1999	1.00		FGI				0.00
12	11150 Ruggedized Case (LOT,DF9H22	101			5000050000	R	11/24/1999	1.00		FGI				0.00
13	11150 Ruggedized Case (LOT,DF9H22	102			5000050000	R	11/24/1999	1.00		FGI				0.00
14	11150 Ruggedized Case (LOT,DF9H22	103			5000050000	R	11/24/1999	1.00		FGI				0.00
15	12150 System Unit, Milkey(SN)	21			3000010000	I	09/22/1999	1.00		MSI				0.00
16	12150 System Unit, Milkey(SN)	21			5000010000	R	09/22/1999	1.00		MSI				0.00

Display the Complete Lot/Serial Transaction History or Any Part of the Picture

As-Built Configuration

Shows Which Lot and Serial Numbered Parts Were Used to Build Specific Products

- Double-click a lot or serial number displayed in the transaction history to view the As-Built Configuration.
- Implosion logic easily locates all finished goods that included a particular lot/serial controlled component and identifies customer orders affected by discrepant material as required by FDA, FAA and government contract suppliers.
- Quickly search by Lot Number, Serial Number, Order Number or Part ID.

- Serial number nesting provides complete visibility of all component serial numbers used to manufacture a serial controlled parent part.
- Explosion logic provides quick access to all component lots used to make a particular finished good to locate possible discrepant component lots.
- Join new component lot/serial numbers to parent lot/serial numbers for complete Configuration Management without the overhead of full top-to-bottom lot/serial tracking.
- Automatically record As-Built Configurations as you issue material to shop orders.

Level	Parent Lot	Parent Serial	Part ID	Comp Lot	Comp Serial	Issue Qty	Order	Date
1		31	12150		21			
2	1	32	12350		12	1.00	3000010000	09/22/1999

A “Where-Used” Inquiry for Lot/Serial Controlled Parts

- Automatically generate lot and/or serial numbers on work orders.
- Assign lot/serial numbers before or after manufacturing.
- Lot/Serial Number Range function allows quick selection of lot/serial numbers upon receipt of material.

Order - Line - Del	Part ID	Ship Quantity	Total Picked
300001-02-01	11050	2.00	1.00

Available Serial Numbers: 32

Selected Serial Numbers: 31

Select Available Serial Numbers To Ship With Specific Sales Orders

© Exact Group B.V., 2012. All rights reserved. All trademarks mentioned herein belong to their respective owners.

For further information please call **1.855.EXACTMAX (1.855.392.2862)** or visit max.exactamerica.com.